

DIXIE, ID

WILSON BAR USFS

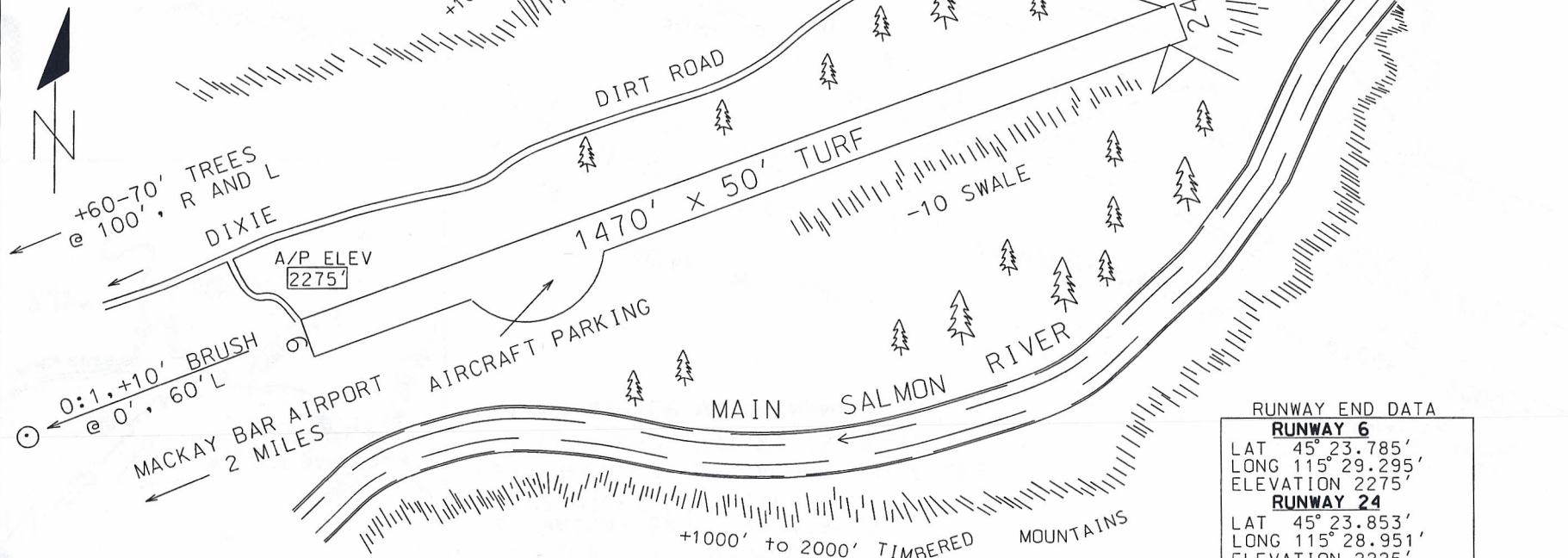
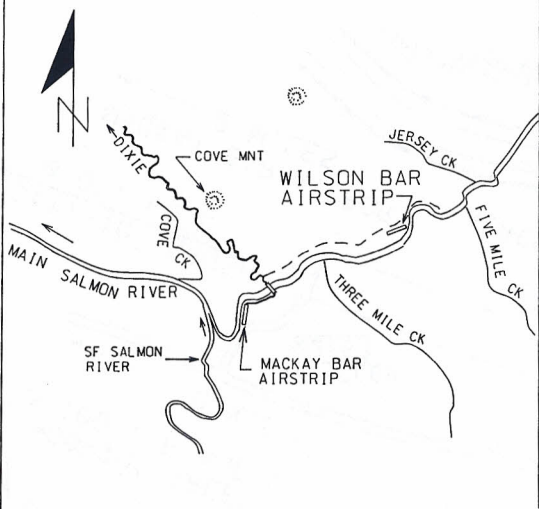
SITE NO. 04179.01A

REMARKS

ACRES (E)

- (1) RUNWAY NOT MARKED
- (2) MACKAY BAR PVT AIRPORT  
2 MILES DOWNRIVER
- (3) TREES 40'-60' ALONG RWY EDGES
- (4) LAST 240' RWY 24 IS UPHILL
- (5) NO WINTER MAINTENANCE

NUMEROUS TALL TREES  
ALONG RIVER ON APPROACH  
TO RWY 24



RUNWAY END DATA	
<b>RUNWAY 6</b>	
LAT	45° 23.785'
LONG	115° 29.295'
ELEVATION	2275'
<b>RUNWAY 24</b>	
LAT	45° 23.853'
LONG	115° 28.951'
ELEVATION	2225'

RUNWAY END DATA GATHERED USING  
GARMIN 196 HAND HELD GPS AND  
USGS 7.5' SERIES MAP

24 JUNE 2011

NOT TO SCALE