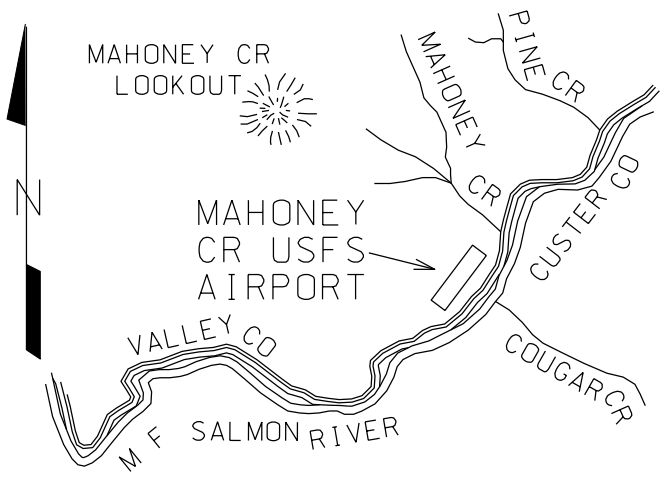
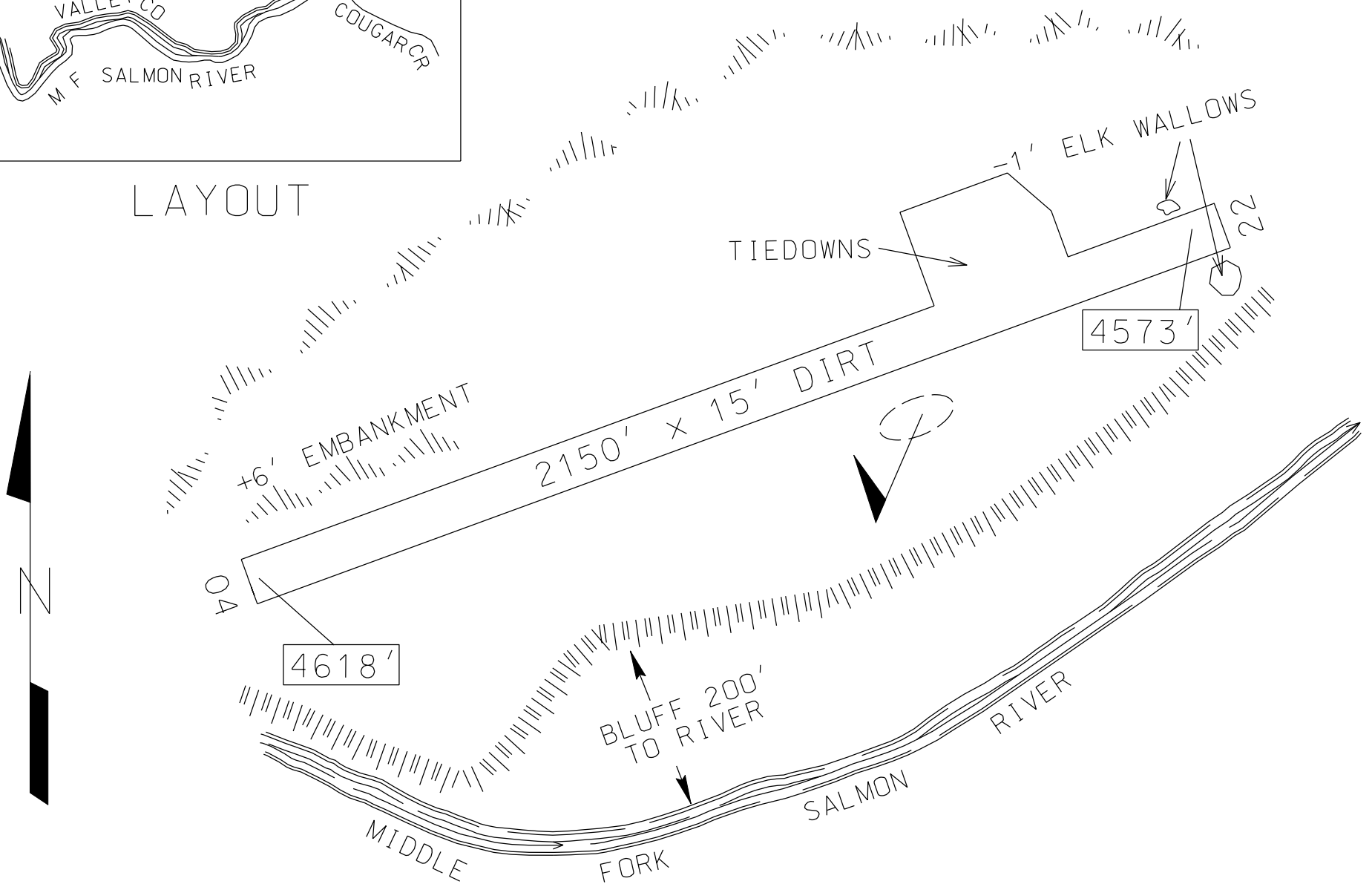


LOCATION

LAT 44° 44.68' LONG 114° 55.28'



LAYOUT



ELEVATION 4618

CTAF 122.9

LOCATION 2 MILES SE OF RANGER STA.

FUEL NO

VOR FREQ RAD NM
LKT 113.5 228° 39.0

SERVICES
TIEDOWNS

COMMUNICATIONS CTAF 122.9

NAV AIDS NO

MANAGER 208-879-4101

LIGHTS NO

FBO(s)
NO

ATTENDED NO

REMARKS NORMALLY LAND RWY 21, DEPART RWY 03. RUNWAY MARKED WITH WHITE PAINTED BOUNDARY MARKERS SET AT 65' WIDE WITH 15' BARE DIRT CENTERLINE. 1' DEEP DITCH RUNS ALONG BOTH SIDES OF RUNWAY.

CAUTION: DEEP ELK WALLOWS LOCATED ADJACENT TO END OF RWY 21.