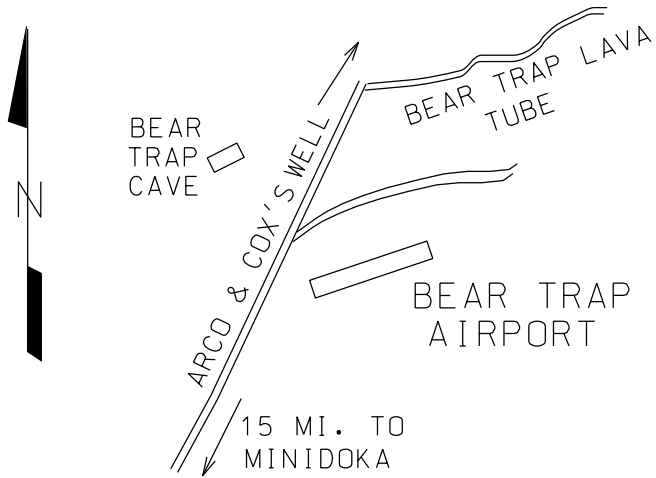
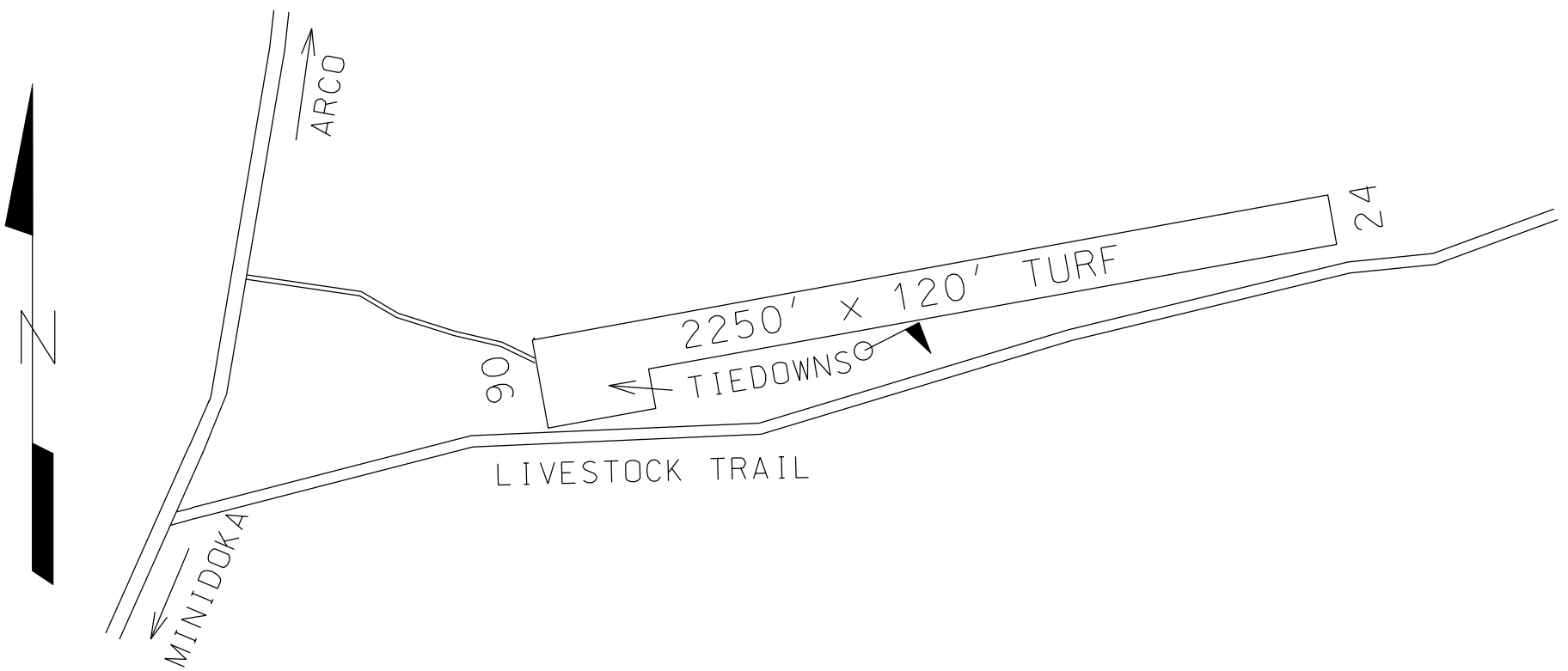


### LOCATION

LAT 42° 58.52' LONG 113° 21.05'



### LAYOUT



ELEVATION 4716

CTAF 122.9

LOCATION 15 MILE NE OF MINIDOKA

FUEL NO

<u>VOR</u>	<u>FREQ</u>	<u>RAD</u>	<u>NM</u>
BYI	114.1	025°	32.5

SERVICES  
TIEDOWNS

COMMUNICATIONS CTAF 122.9

NAV AIDS NO

MANAGER 208-334-8775, STATE OWNED

LIGHTS NO

FBO(s) NO

ATTENDED NO

### REMARKS

NO LINE OF SIGHT BETWEEN RWY ENDS. RWY 6-24 SUBJECT TO ONGOING DAMAGE BY LIVESTOCK, GROUND VEHICLES, AND RODENTS. NO WINTER MAINTENANCE.

01/09