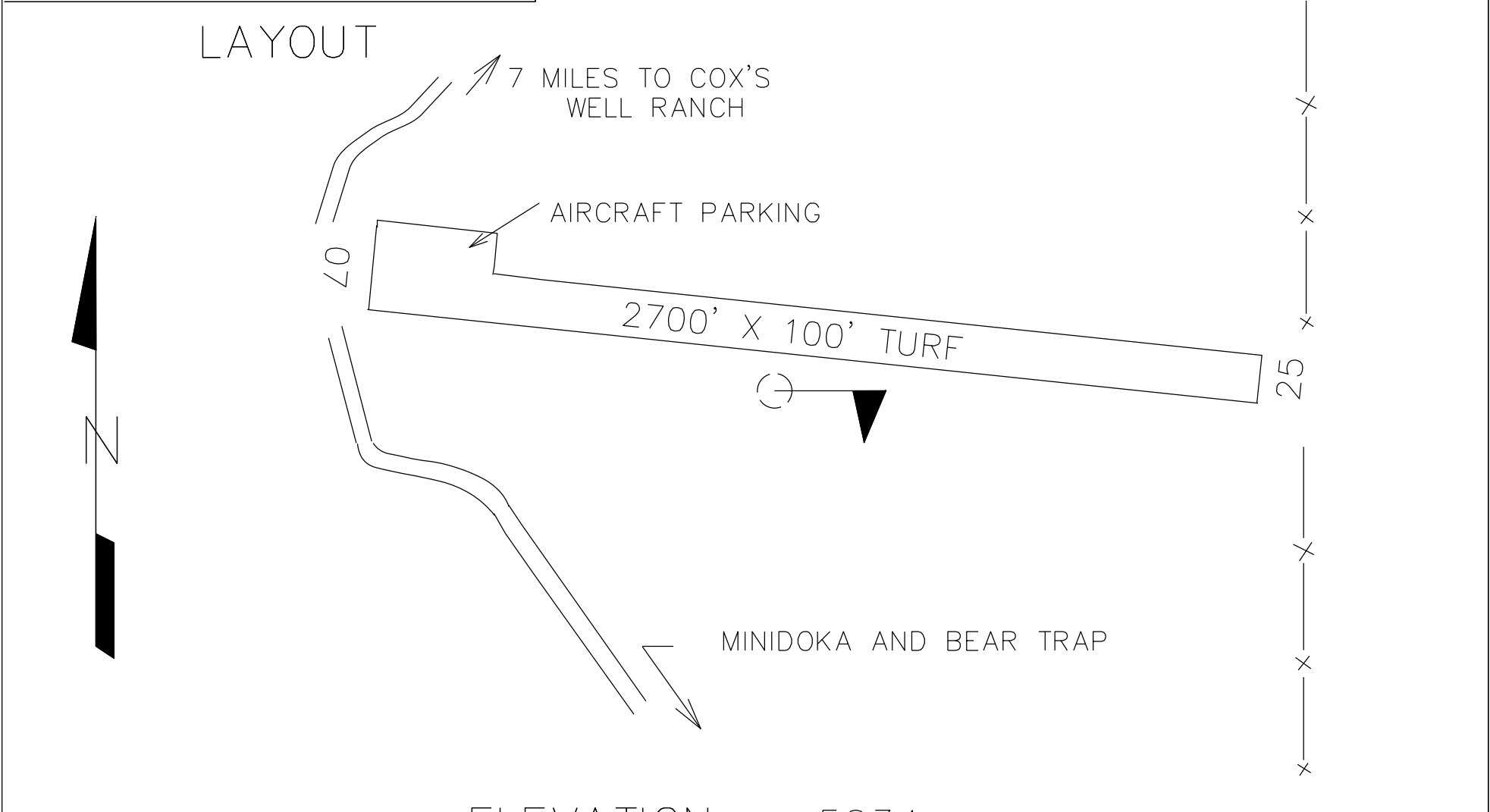


LAT 43° 13.07' LONG 113° 13.65'



ELEVATION 5034

CTAF 122.9

LOCATION

23 MILES SW OF ATOMIC CITY

<u>VOR</u>	<u>FREQ</u>	<u>RAD</u>	<u>NM</u>
PIH	112.6	294°	33.0

COMMUNICATIONS CTAF 122.9

NAV AIDS NO

LIGHTS NO

ATTENDED NO

FUEL NO

SERVICES
TIEDOWNS

MANAGER
208-334-8775, STATE OPERATED

FBO(s)
NO

REMARKS

AIRPORT SUBJECT TO ONGOING DAMAGE BY LIVESTOCK, GROUND VEHICLES AND RODENTS. NO WINTER MAINTENANCE. PILOTS AND PASSENGERS CAN EXPECT SCATTERED SILENCE AND INTERMITTENT LONELINESS AT THIS AIRPORT.