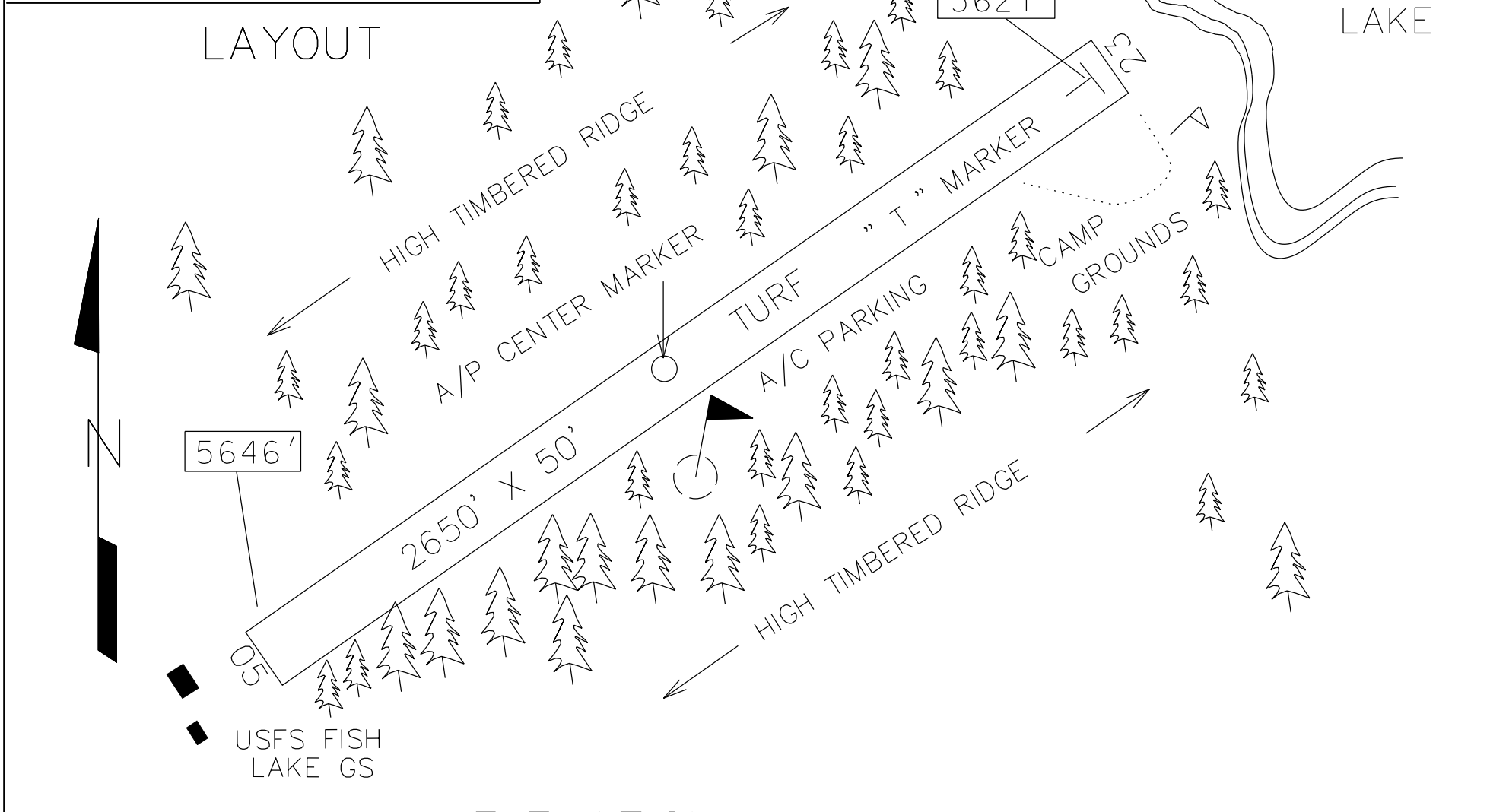


LAT 46° 19.81' LONG 115° 03.79'



ELEVATION 5646

CTAF 122.9

LOCATION ADJACENT W OF FISH LAKE

FUEL NO

VOR FREQ RAD NM
MSO 112.8 212° 54.0

SERVICES NO

COMMUNICATIONS CTAF 122.9

NAV AIDS NO

MANAGER 208-983-1964

LIGHTS NO

FBO(s) NO

ATTENDED NO

REMARKS LAND RWY 22, DEPART RWY 04. LANDING OR TAKEOFF WITH UNFAVORABLE WINDS NOT RECOMMENDED. CHECK AIRCRAFT PERFORMANCE FOR HIGH DENSITY ALTITUDE. GO AROUND FROM FINAL NOT POSSIBLE DUE TO HIGH, ENCLOSING TERRAIN. RECOMMENDED FOR USE BY MOUNTAIN PROFICIENT PILOTS. WILDLIFE OR STOCK FREQUENTLY ON RUNWAY. DO NOT TAXI PAST CONE MARKERS AT THE END OF RUNWAY 04. ATTEMPTING DEPARTURE RWY 04 WITH TAILWIND VERY HAZARDOUS. NO WINTER MAINTENANCE.