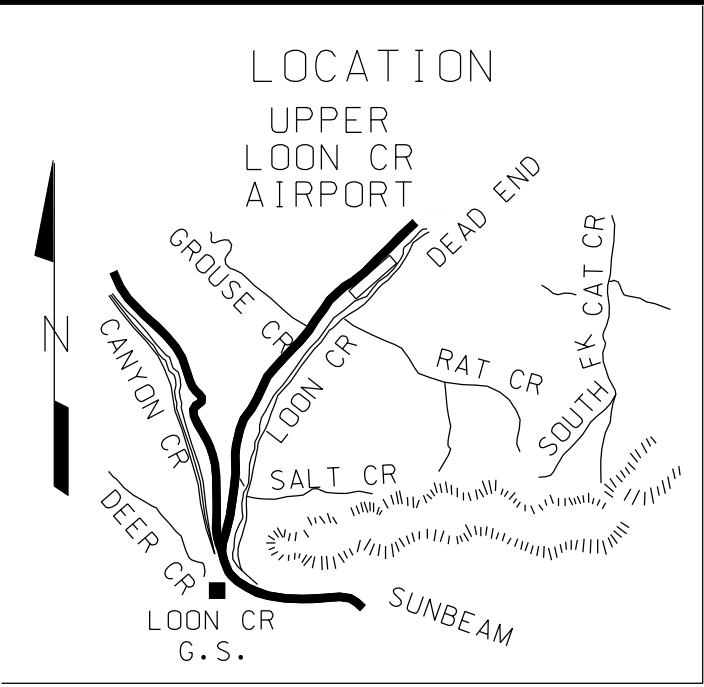
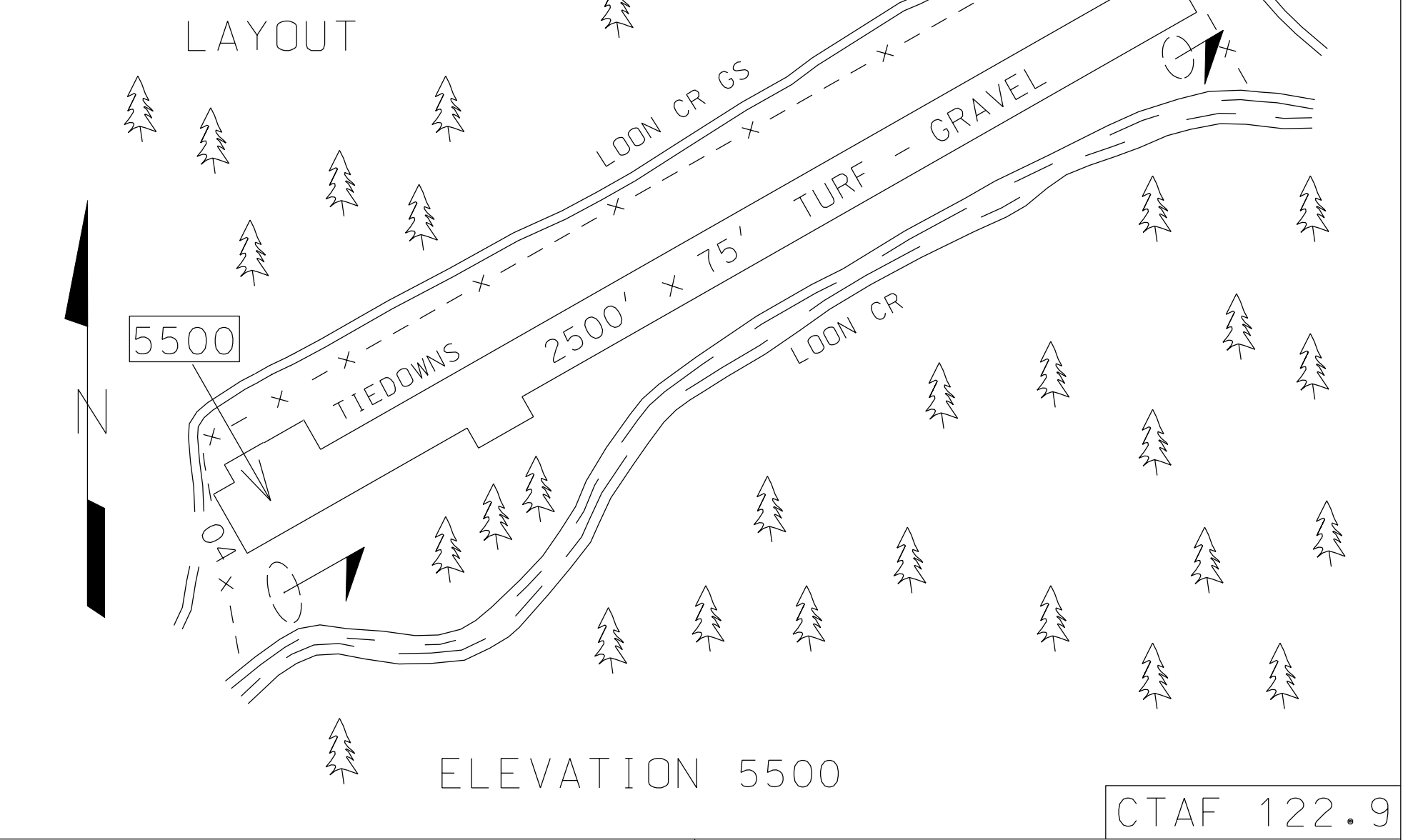


UPPER LOON CREEK USFS

U72



LAT 44° 35.49' LONG 114° 49.39'



LOCATION 26 MILES W OF CHALLIS

VOR FREQ RAD NM
LKT 113.5 211° 40.0

COMMUNICATIONS CTAF 122.9

NAV AIDS NO

LIGHTS NO

ATTENDED NO

FUEL NO

SERVICES NO

MANAGER 208-879-4101

FBO(s)
NO

REMARKS
 RECOMMENDED FOR EXPERIENCED MOUNTAIN PILOTS ONLY. RECOMMEND LAND RWY 22, DEPART RWY 04 WHEN WIND CONDITIONS PERMIT. RWY 04-22 EDGES AND THRSGLDS MARKED WITH WHITE ROCKS. NO WINTER MAINTENANCE.

9/08

UPPER LOON CREEK USFS

U72